



ACE2 Mouse mAb(2C1)

Catalog No	YP-Ab-17213
Isotype	IgG
Reactivity	Human, Mouse,Rat
Applications	WB, IHC, IF
Gene Name	ACE2 UNQ868/PRO1885
Protein Name	ACE2
Immunogen	Synthesized peptide derived from human ACE2
Specificity	This antibody detects endogenous levels of ACE2 at Human, Mouse,Rat
Formulation	Liquid in PBS containing 50% glycerol, and 0.02% sodium azide.
Source	Mouse,monoclonal
Purification	The antibody was affinity-purified from mouse ascites by affinity-chromatography using epitope-specific immunogen.
Dilution	WB 1:500-2000 IHC 1:50-200. IF 1:50-200
Concentration	1 mg/ml
Purity	≥90%
Storage Stability	-20°C/1 year
Synonyms	Angiotensin-converting enzyme 2 (EC 3.4.17.23) (ACE-related carboxypeptidase) (Angiotensin-converting enzyme homolog) (ACEH) (Metalloprotease MPROT15) [Cleaved into: Processed angiotensin-converting enzyme 2]
Observed Band	120-135kD
Cell Pathway	[Processed angiotensin-converting enzyme 2]: Secreted .; Cell membrane ; Single-pass type I membrane protein . Cytoplasm . Cell projection, cilium . Apical cell membrane . Detected in both cell membrane and cytoplasm in neurons. .; [Isoform 2]: Apical cell membrane .
Tissue Specificity	Expressed in endothelial cells from small and large arteries, and in arterial smooth muscle cells (at protein level) (PubMed:15141377). Expressed in enterocytes of the small intestine, Leydig cells and Sertoli cells (at protein level) (PubMed:15141377). Expressed in the renal proximal tubule and the small intestine (at protein level) (PubMed:18424768). Expressed in heart, kidney, testis, and gastrointestinal system (at protein level) (PubMed:10969042, PubMed:10924499, PubMed:15231706, PubMed:12459472, PubMed:15671045, PubMed:32715618, PubMed:32170560). In lung, expressed at low levels in some alveolar type 2 cells, the expression seems to be individual-specific (at protein level) (PubMed:32425701, PubMed:15141377, PubMed:32715618, PubMed:32170560, PubMed:33432184). Expressed in nasal epith
Function	cofactor: Binds 1 chloride ion per subunit.,cofactor: Binds 1 zinc ion per subunit.,enzyme regulation: Activated by chloride and fluoride, but not bromide.



Inhibited by MLN-4760, cFP_Leu, and EDTA, but not by the ACE inhibitors losinipril, captopril and enalaprilat.,function:Carboxypeptidase which converts angiotensin I to angiotensin 1-9, a peptide of unknown function, and angiotensin II to angiotensin 1-7, a vasodilator. Also able to hydrolyze apelin-13 and dynorphin-13 with high efficiency. May be an important regulator of heart function. In case of human coronaviruses SARS and HCoV-NL63 infections, serve as functional receptor for the spike glycoprotein of both coronaviruses.,induction:Up-regulated in failing heart.,PTM:N-glycosylation on Asn-90 may limit SARS infectivity.,similarity:Belongs to the peptidase M2 family.,subunit:Interacts with ITGB1. Interacts with SARS-CoV and HCoV-NL63

Background

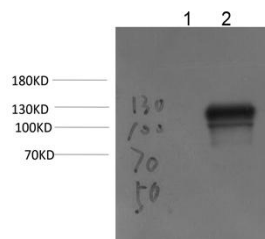
matters needing attention

Avoid repeated freezing and thawing!

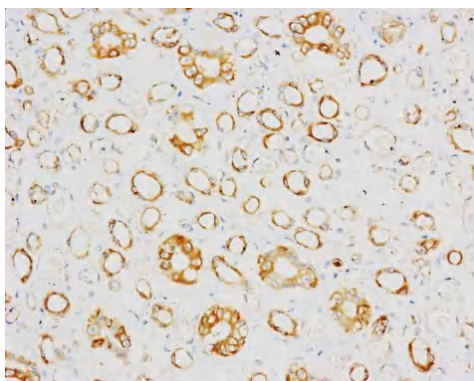
Usage suggestions

This product can be used in immunological reaction related experiments. For more information, please consult technical personnel.

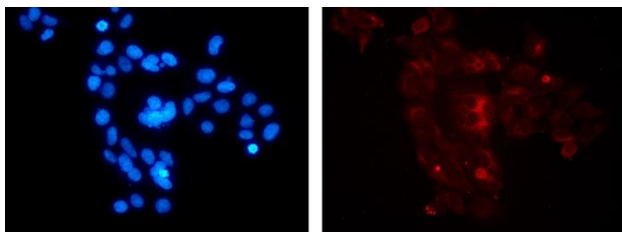
Products Images



Western blot analysis of 1 293T cell, 2 293T Transfected ACE2 CellLysate using ACE2 Mouse Monoclonla Antibody diluted at 1:50,000.



Immunohistochemical analysis of paraffin-embedded Human Kidney Tissue using ACE2 Mouse monoclonal antibody diluted at 1:200.



IF analysis of 293T Transfected ACE2 CellLysate using ACE2 Mouse Monoclonla Antibody diluted at 1:500.